

Stem nesting bee identification guide



Mud/Sand

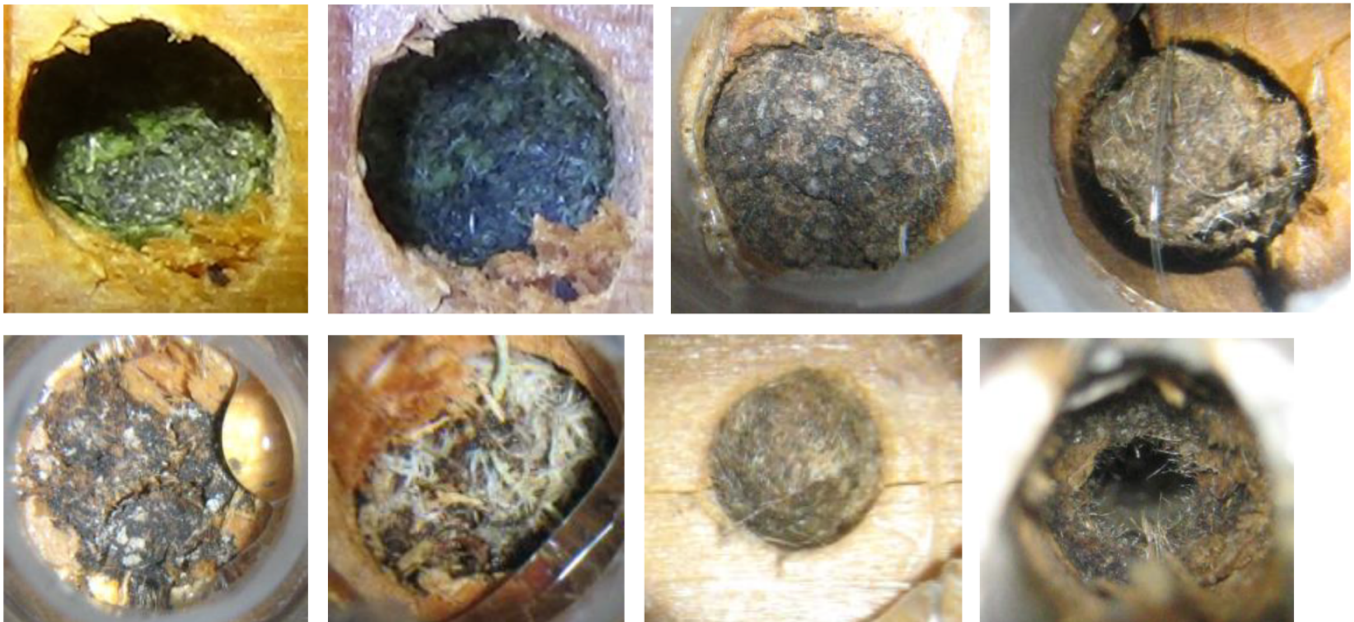
Full plug, partial plug (emerged), rim. (Eumeninae-potter wasps, Osmia –mason bee)



Resin

Opaque, white, reddish or yellowish with debris or not. Crystalline, dry or sticky.
(Dainthidium – resin bees, Passaloecus – black aphid wasps)

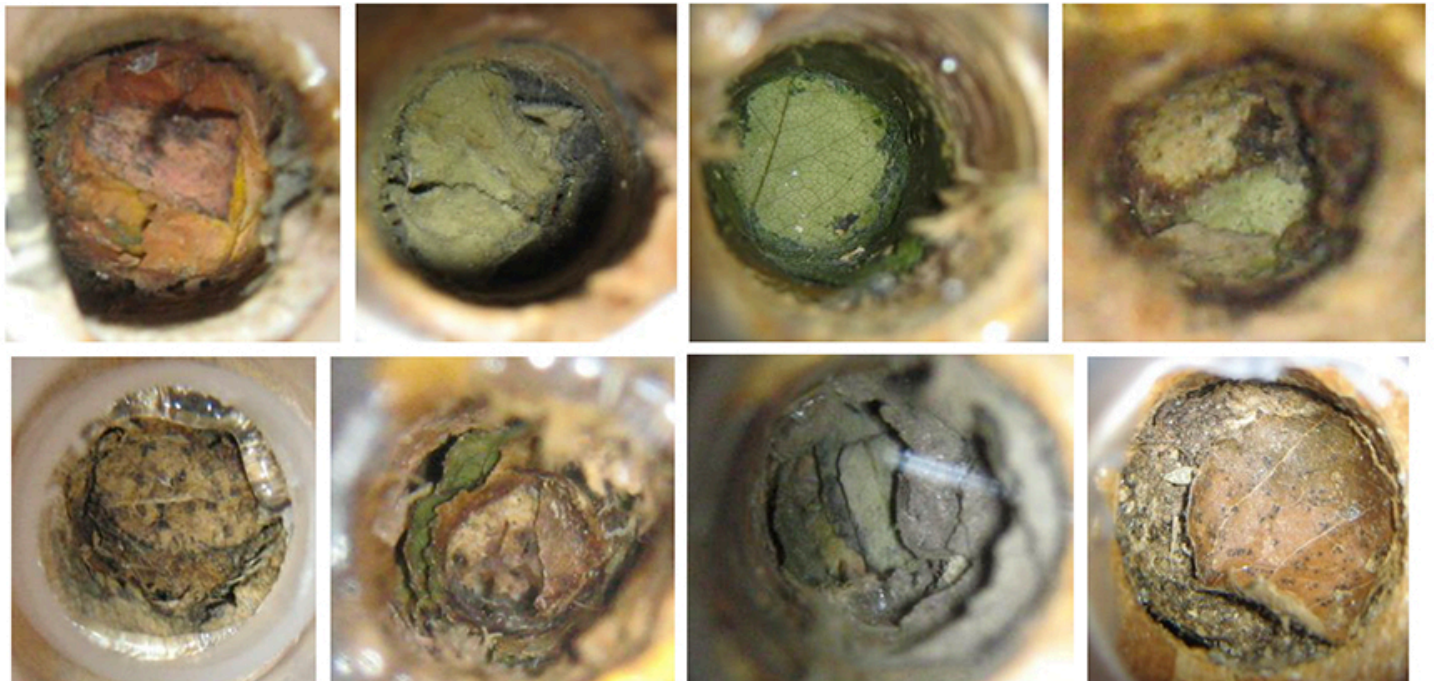
Photo: C. . Satyshur



Chewed Leaves

Photo: C. Satyshur

Start green fade to brown, look like mud plugs (MEGACHILIDAE, leafcutter bees)



Whole Leaves

Photo: C. Satyshur

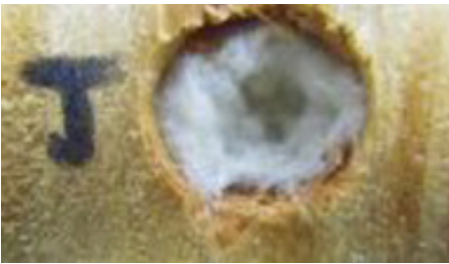
Leaf circles or ovals are used to line the stem, and ends. Sometimes petals are used.



Grass
(Grass carrying wasps)



Spider web



Cotton, plant fiber fuzz
(Anthidium – wood carder bees)



Wood Photo: Bee's Needs
(Dainthidium – resin bees)



Loose Debris
Boulder

Photo: Bees' Needs U of Colorado